



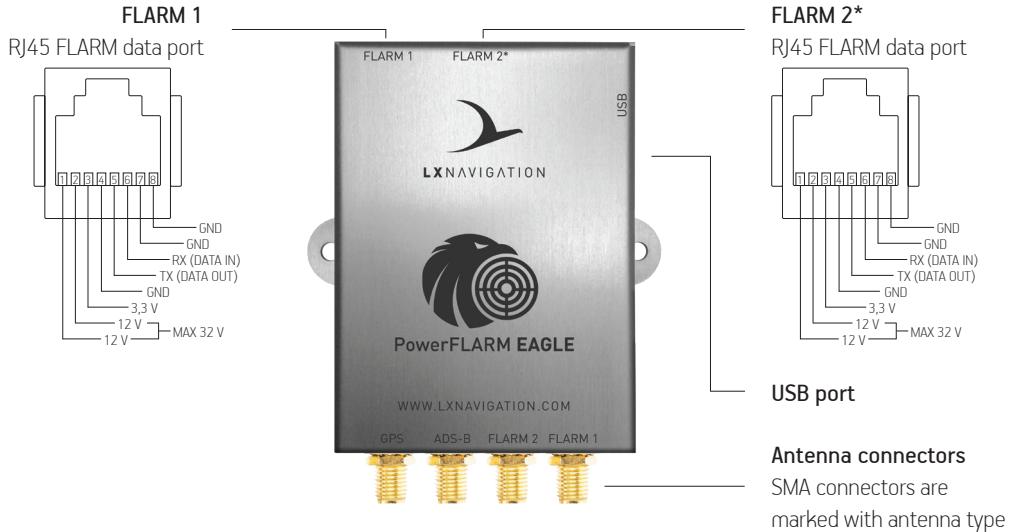
# PowerFLARM **EAGLE**

User's manual  
version 1.4

Made in Slovenia.

Copyright © 2020, LX navigation d.o.o., all rights reserved.

Do not connect any CAN (Power & data) cables or CAN devices to FLARM1/FLARM2 RJ45 ports as it can damage the flarm unit. FLARM1/FLARM2 RJ45 ports are only compatible with other flarm devices.



\*On this port the flarm unit has the ability to select between two sources of receiving data: FLARM PORT 2 or built-in Bluetooth/WiFi module. Perform the selection via switch on the bottom of unit. If your unit doesn't have built-in Bluetooth/WiFi option, than the default source is set to FLARM PORT 2.

## Quick Guide

**Congratulations for purchasing the LX FLARM Eagle. Please configure the LX FLARM Eagle before first use. Set your ICAO 24-bit address, aircraft type and transponder configuration (chapter 1.2).**

### 1. Installation

After unpackaging, power the device with 9-36 V DC power via main power supply or RJ 12 (1:1 cable), connect and install GPS antenna facing the GPS sign of the antenna towards the sky. Connect and install FLARM RF antenna and ADS-B antenna (use center fed dipole antenna) according to FTD-041 ([www.flarm.com](http://www.flarm.com)) and configure the unit.

#### 1.1. Basic configuration of LX FLARM Eagle

The LX FLARM Eagle can be configured by the use of the config file stored on USB flash drive using program

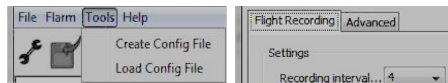
<sup>1</sup>FLARM Tools. Always use the latest version of <sup>1</sup>FLARM Tools program on your PC.

Default settings:

- Flight recorder logtime is set to 4 seconds.
- Communication baud rate is set to 19200 bps.
- Output data is set to "navigation & FLARM".
- Horizontal detection range is set to 25500 meters.

#### 1.2 Configuration via USB flash drive

To create the config file, open the latest version of <sup>1</sup>FLARM Tools program ([www.flarm.com](http://www.flarm.com)). On the top navigation bar go to option Tools/Create Config File (left picture). You are presented with Flight Recording and Advanced subpages (right picture).



<sup>1</sup>Latest FLARM Tools program - [https://flarm.com/wp-content/uploads/man/FLARM\\_Tool\\_3\\_6\\_4\\_1f59603.exe](https://flarm.com/wp-content/uploads/man/FLARM_Tool_3_6_4_1f59603.exe)

Under Flight Recording, you will find options for Recording Interval and Pilot/Airplane properties, under Advanced you can find Connection settings, Radio settings, device ID for radio communication and ICAO 24-bit address in case you have transponder.

When appropriate settings have been made, click Save to generate the config file. Save the file to the root of USB flash drive, insert it into LX FLARM Eagle and turn it on. The configuration will start automatically. Wait 5 minutes and restart it. The LX FLARM Eagle is configured.

### 3. Flights/logbook download

The most convenient way to download flights is via USB flash drive, as it is an automatic procedure. FLARM will store all finished flights from internal memory to USB flash drive (if it is inserted). Stored flights can be viewed on PC (.igc format).

**Some settings in FLARM Firmware will not work correctly or will be limited if you do not use the latest FLARM Firmware version. Ensure that LX FLARM Eagle is updated at least once per year.**

### 4. Updating LX FLARM Eagle

To update device, download the latest FW version at [www.lxnavigation.com/support/software](http://www.lxnavigation.com/support/software) and copy it to the root of USB flash drive. Insert the USB into the device and power it on. Wait 5 minutes and restart it. The LX FLARM Eagle is updated.

### 5. Completing the installation

Connect any compatible FLARM display to your LX FLARM Eagle via RJ11 FLARM cable to get the full potential of the system. LX FLARM Eagle will provide the necessary power (12 V and 3,3 V) and data via single cable.

We recommend using LX FLARM Eagle with LX navigation FLARM accessories - LX Traffic monitor, LX FLARM Colour display and LX FLARM LED display. Discover more at [www.lxnavigation.com](http://www.lxnavigation.com).

## End user license agreement

This agreement is made between the Customer (the person and/or company that bought the End Product, and all subsequent users and owners) and LX Navigation d.o.o., Tkalska ulica 10, SI-3000 Celje, Slovenia (hereinafter "LXN").

### Terms and termination of agreement

This agreement shall commence when the Customer receives the product.

By buying and using the End Product, the Customer has accepted the following terms and conditions.

If the Customer does not agree with the said terms and conditions, he can return the product if it is undamaged and without any sign of use, within 30 days of receiving it, and receive a full refund, thus terminating this agreement.

### General information

The Customer is hereby notified of the annual Flarm update scheme in its original form:

"From the March 2015 Update, every FLARM device needs to be updated to the latest firmware version at least once per year (rolling 365 days). This has to be part of the Aircraft Maintenance Program (AMP). The entry in the AMP is to be made during installation. If you have a FLARM installation that is not previously monitored by the AMP, an entry should be made as soon as possible."

Other legal and useful information can be found on FLARM official webpage ([www.flarm.com](http://www.flarm.com)).

### End user license agreement

By buying and using the End Product, the Customer has accepted the terms and conditions of FLARM EULA (FTD-019), found at [www.flarm.com/manuals-documents/](http://www.flarm.com/manuals-documents/).

## Warranty

LX FLARM Eagle, software, firmware, license keys, and data are provided on an "as is" basis without warranty of any kind — either expressed or implied — including, without limitation, any implied warranties of merchantability or fitness for a particular purpose. LXN does not warrant the performance of the device, software, firmware, license key, or data or that the device, software, firmware, license key, or data will meet your requirements or operate error free.

LXN warrants this device for a period of two (2) years after the original date of purchase against defects due to faulty workmanship or materials arising from normal use of the device. The warranty covers working parts that affect the function of the device. It does NOT cover cosmetic deterioration caused by fair wear and tear, or damage caused by accident, misuse or neglect. Any attempt to open or take apart the device (or its accessories) will void the warranty.

## Limitation of Liability

In no event shall LXN be liable to the Costumer or any party related to the Costumer for any indirect, incidental, consequential, special, exemplary, or punitive damages (including, without limitation, damages for loss of business profits, business interruption, loss of business information, loss of data or other such pecuniary loss), whether under a theory of contract, warranty, tort (including negligence), products liability, or otherwise, even if LXN has been advised of the possibility of such damages. In no event will LXN's total aggregate and cumulative liability to the Costumer for any and all claims of any kind arising hereunder exceed the amount of fees actually paid by the Costumer for the device, license keys or data giving rise to the claim in the twelve months preceding the claim. The foregoing limitations will apply even if the above stated remedy fails of its essential purpose.

## **Indemnification**

The Costumer will, at their own expense, indemnify and hold LXN, and all officers, directors, employees and resellers thereof, harmless from and against any and all claims, actions, liabilities, losses, damages, judgments, grants, costs, and expenses, including reasonable attorneys' fees (collectively, "Claims"), arising out of any use of a LX FLARM Eagle, software, firmware, license key, or data by the Costumer, any party related to the Costumer, or any party acting upon their authorization.

## **Amendments**

LXN reserves the right, in its sole discretion, to amend this Agreement from time to time by posting an updated version of the Agreement on [www.lxnavigation.com](http://www.lxnavigation.com), provided that disputes arising hereunder will be resolved in accordance with the terms of the Agreement in effect at the time the dispute arose. We encourage you to review the published Agreement from time to time to make

yourself aware of changes. Material changes to these terms will be effective upon the earlier of (I) your first use of the LX FLARM Eagle, software, firmware, license key, or data with actual knowledge of such change, or (II) 30 days from publishing the amended Agreement on [www.lxnavigation.com](http://www.lxnavigation.com). If there is a conflict between this Agreement and the most current version of this Agreement, posted at [www.lxnavigation.com](http://www.lxnavigation.com), the most current version will prevail. Your use of the LX FLARM Eagle, software, firmware, license key, or data after the amended Agreement becomes effective constitutes your acceptance of the amended Agreement. If you do not accept amendments made to this Agreement, then it is your responsibility to stop using the LX FLARM Eagle, software, firmware, license key, and data.

Return address:

LX navigation d.o.o., Tkalska ulica 10, SI-3000 Celje, Slovenia

Copyright © 2020, LX navigation d.o.o., all rights reserved.

